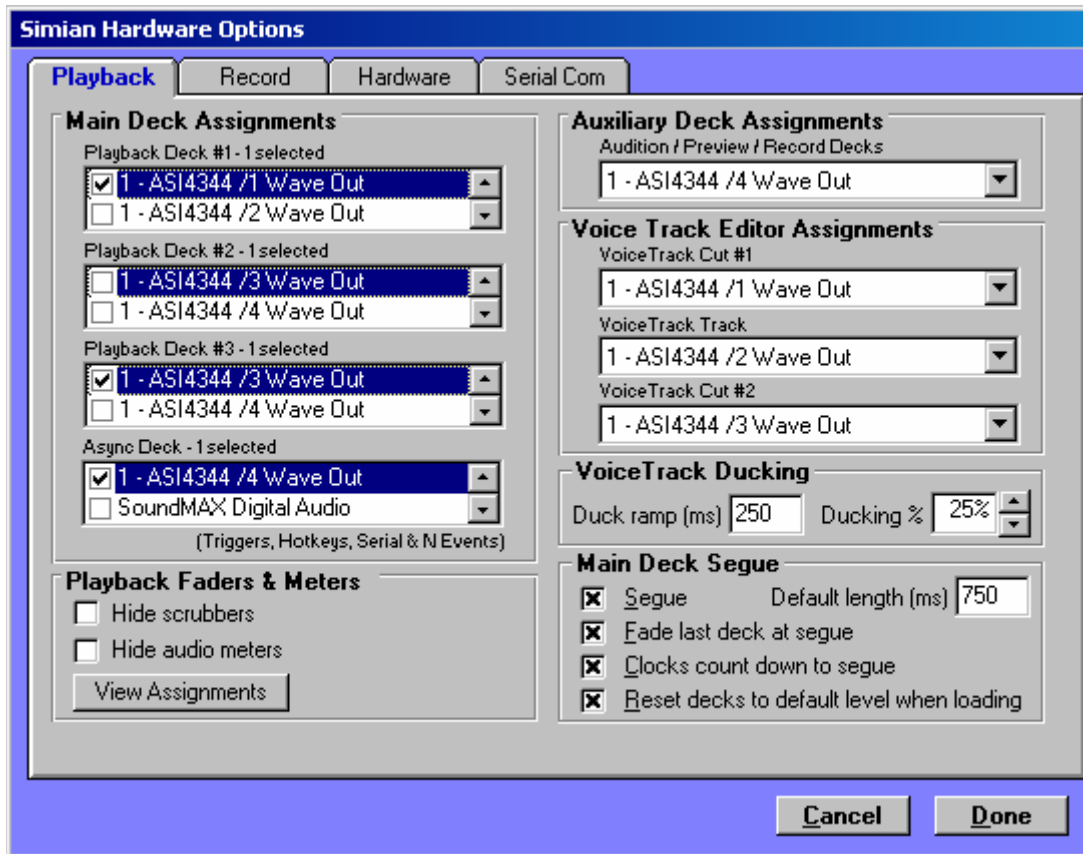


Audio Science Sound Card Configuration for Simian

To assign which audio devices Simian uses, go to the **Tools, Hardware Options** to bring up the screen shown below.



The ASI cards are easily identified by their model number, followed by '1 Wave Out', '2 Wave Out', '3 Wave Out', '4 Wave Out' etc.

When multiple ASI cards are installed, the Wave Out devices will continue to increment, so the second card will have 'Wave Outs 5, 6, 7 and 8'; the third '9, 10, 11, 12' etc.

In the **Main Deck Assignments** (Simian's main decks 1, 2 and 3), you'll only see two audio card devices at a time; you'll need to scroll through the list to select the correct devices. The **Async Deck** is also known as Simian's Deck 4, this normally hidden deck is where Hot Keys and Triggers are played.

Under normal circumstances, you should make sure that you only have '1 (device) selected' for each Deck.

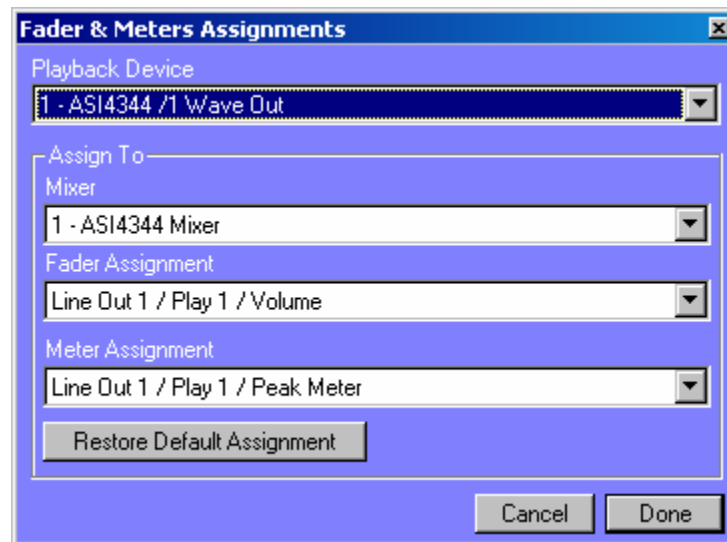
The **Auxiliary** and **Voice Track Decks** are configured in a similar way, but this time from a drop-down box instead of a list of check-boxes.

The illustration shows a typical Simian setup with an ASI audio card, we would normally recommend that the on-board sound card (shown here) is disabled in system BIOS.

[Simian] Fader and Meter Assignments

Simian needs to know which mixer and volume control to associate with each of the audio devices, so that it can fade out mixers and accomplish voice-track ducking.

To bring up the settings, click the **View Assignments** button from Simian's Hardware Settings



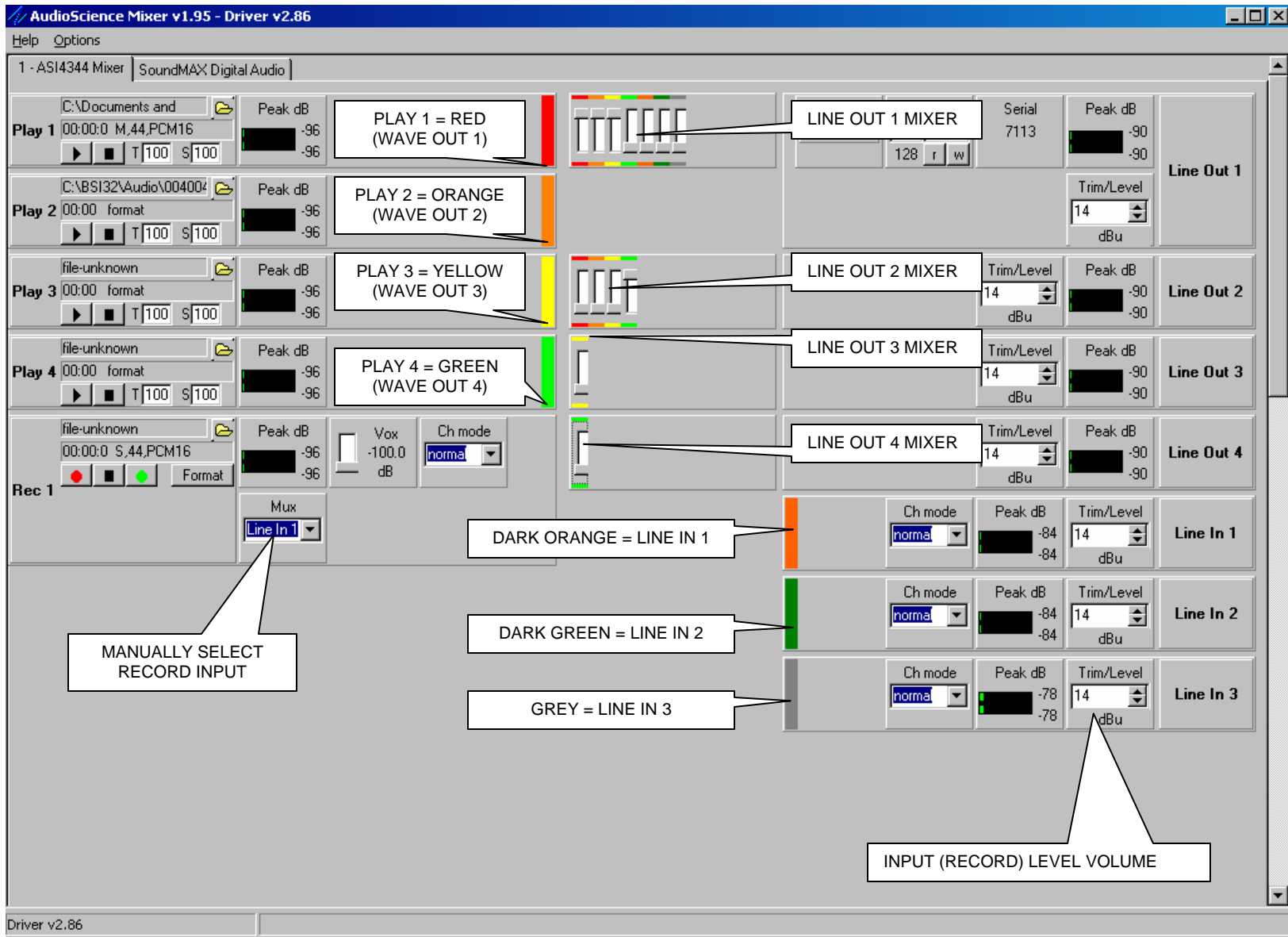
The **Playback Device** is the Wave Output device on the audio card. With ASI cards, you'll see a 1 – followed by the model number for the first card, 2 – for the second etc. The Wave Out number will increment depending how many cards are installed as discussed before.

Now choose the **Mixer** to assign to the Playback Device that you have selected. These correspond to the mixers on the Audio Science Mixer application (see diagram below). Where the audio card has multiple physical outputs, there will be a Line Out 1, 2 (and 3 and 4 if the card supports it).

This is an important step as the cards that have multiple physical outputs, have a Play 1, 2, 3 and 4 controls for each physical output. Make sure you have selected the correct physical output otherwise Simian will be fading up and down the wrong audio mixer!

Finally, the **Meter Assignment** tells Simian which meters on the audio card to display while playing through the selected Playback Device. Again, ensure the correct Line Output is selected for each device.

You should go through ALL the Playback Devices displayed and check that they are all configured correctly. The '**Restore Default Assignment**' button will try to ascertain a default setting, however this should not be relied upon as some audio cards display their record devices before the playback devices – or you may wish to route to the second audio output.



Audio Science Mixer Application

Play 1, 2, 3 and 4 are displayed as 1 Wave Out, 2 Wave Out, 3 Wave Out and 4 Wave Out in Simian.
 When a second card is added, Play 1, 2, 3, and 4 of the second card become Wave Out 5, 6, 7 and 8.

Each of the Wave Out and Line Input devices are color coded. The different mixers route those color coded devices to the relevant physical output.

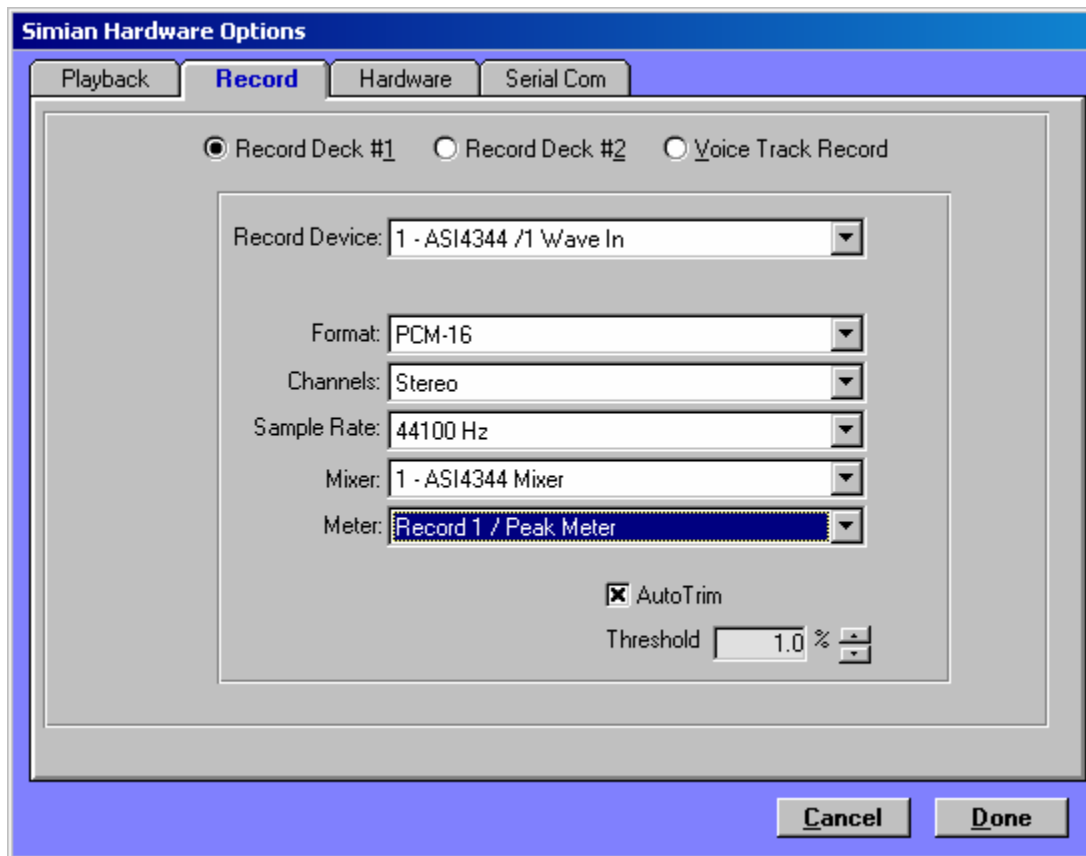
As can be seen from the diagram, not all play (wave out) devices can be routed to every physical output, though this is not a restriction that will cause a problem, but one that needs planning. Furthermore, the three Line Inputs, can only be routed to Line Out 1.

The Trim Levels on the Line Output controls, adjust the overall level of that mixer's output; the trim controls on the Line Inputs are primarily used to adjust the recording control (as well as the level sent to Line Out 1's mixer)

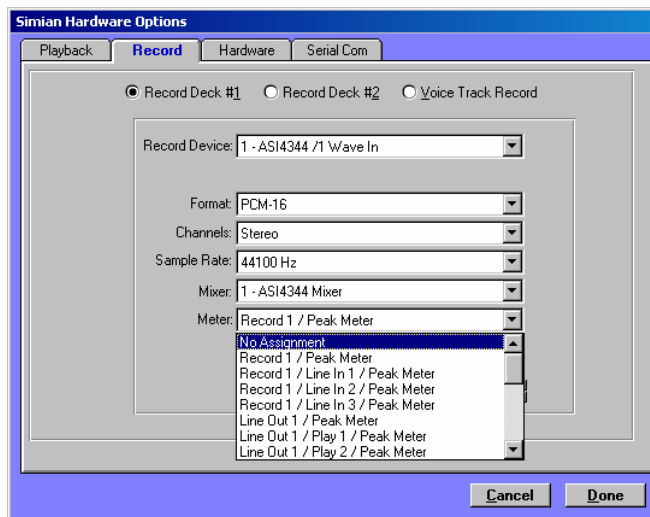
[Simian] Record Deck Assignments

The ASI cards that BSI most regularly uses have only 1 record device and therefore only 1 Wave In device is shown. It's important to have all record decks select this same device with identical formats.

Any of the three Line Inputs can be selected for Record using Simians RECORDSOURCE macro, or the MUX drop down box on the ASI Mixer Panel. This need not be the same Line Input that is fed to the Line 1 Output (thus you can play one Line Input through your PC, while recording another different one).



As can be seen from the diagram below, each Line Input has its OWN record meter! I prefer to use the 'Record 1 / Peak Meter' showing the true level of what I'm recording, rather than one of the Line Inputs.



[Simian Mixer Panel]

Simian can control any of the Audio Science Mixer controls through the Macro commands, or using the on-screen mixer.

Typically, these are used to insert News or Satellite feeds automatically using the: MIXVOLUME x, 100 and MIXVOLUME x, 0 Macros where x is the Simian Mixer number (there are 16 in totally). These command Mute or Fully open the Mixer associated with them.

Under each of the Mixers in Simian's Mixer panel is a button that will bring up the Mixer Setup.

Start off by typing in a friendly name for the Simian Mixer.

Now select which Audio Card **Mixer** you wish to control, the ASI cards will have a familiar legend, so it's easy to see which card you are selecting.

Then chose which **Lines** of the Mixer you wish to control; in this case, we've selected the **Line Out 1 / Line In 1** (this may seem backwards, but think of it as Line Out 1 is fed from Line In 1).

The actually fader option under **Faders:** will be limited at this point, we want to control the **Line Out 1 / Line In 1 / Volume**

On Simian Mixers 2 and 3, setup Line Out 1 / Line In 2 and Line Out 1 / Line In 3 (where the ASI card fitted supports multiple inputs). The mixers Fader assignment will be Line Out 1 / Line In 2 (or 3) / Volume.

